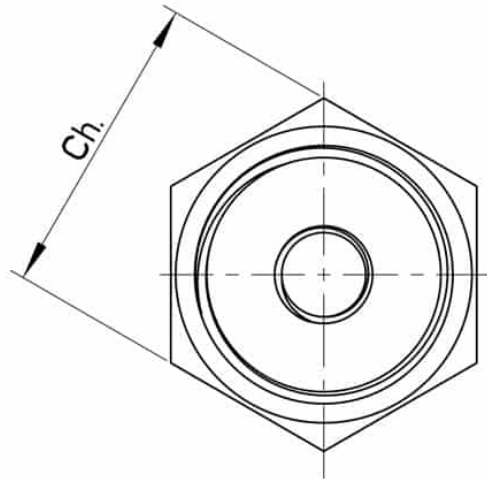
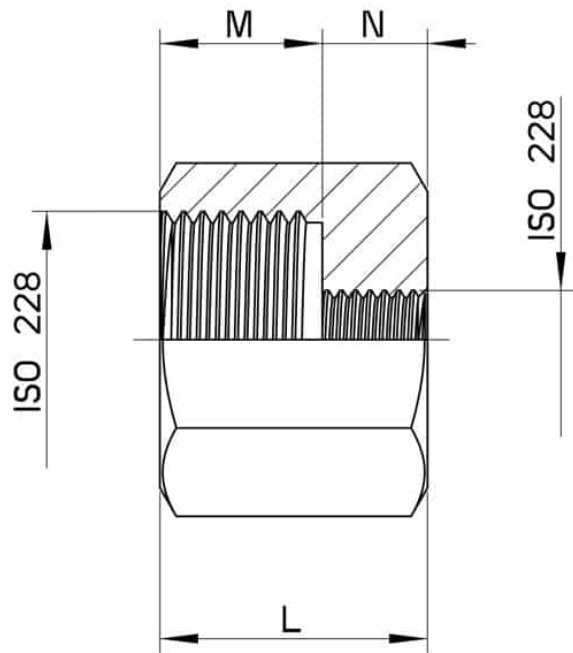


767035 FEMALE FOR ISO 228 FEMALE CYLINDRICAL GAS REDUCTION



Female for ISO 228 Female CYLINDRICAL GAS REDUCTION
Material: Aisi 316L (1.4404)

On request:
M.O.C.A. CE 1935/2004



ISO 228 F/F	M	N	Ch	L	Kg	CODE AISI 316L
3/8" x 1/4"	17	13	22	30	0,062	767035 61500
1/2" x 1/4"	17	13	27	30	0,098	767035 62100
1/2" x 3/8"	17	15	27	32	0,098	767035 62200
3/4" x 1/8"	17	11	32	28	0,125	767035 63200
3/4" x 1/2"	18	19	32	37	0,145	767035 63400
1" x 3/4"	18	17	41	40	0,265	767035 64100
1"1/2 x 1"	20	19	55	42	0,479	767035 65700

