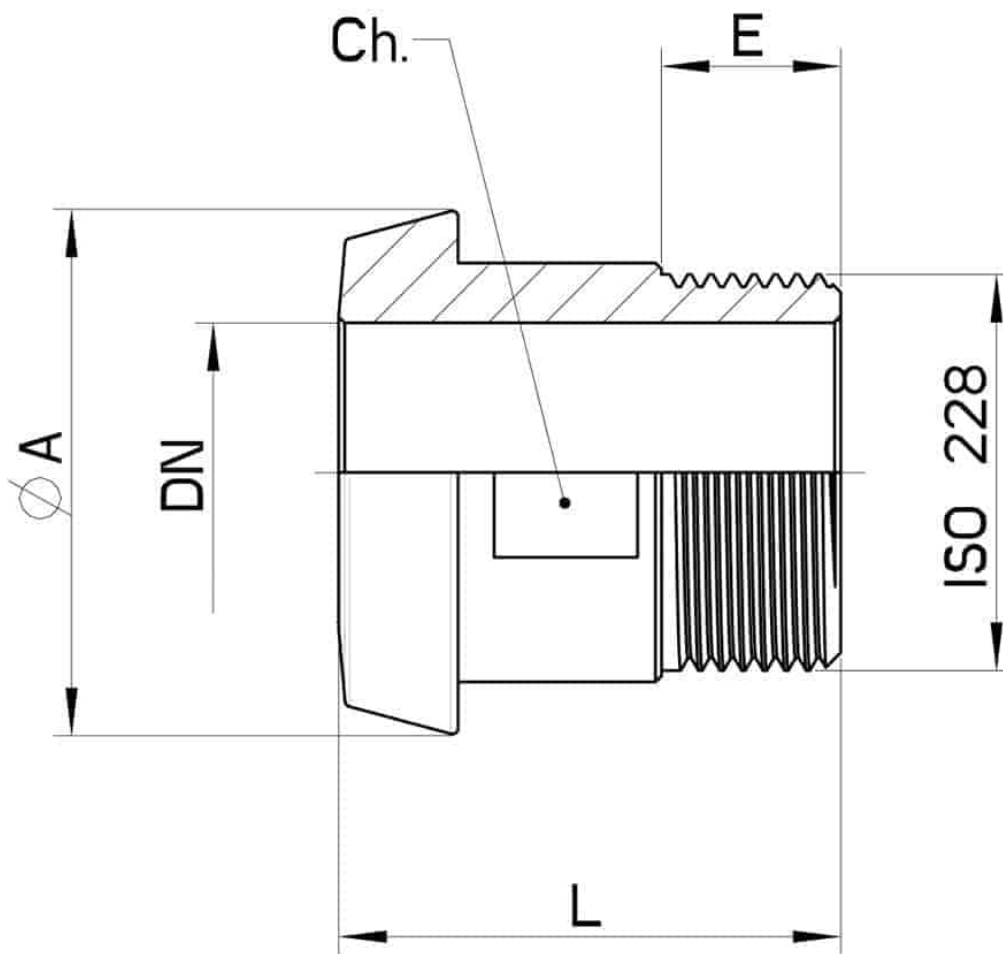


765200 DIN 11851 MALE FOR ISO 228 MALE CYLINDRICAL GAS



DIN 11851 Male for ISO 228 Male CYLINDRICAL GAS
Material: AISI 316L (1.4404)

On request:
M.O.C.A. CE 1935/2004



DN x ISO 228	ØA	E	L	Ch.	Kg	CODE AISI 304L	CODE AISI 316L
10 x 3/8"	22	13	30	17	0,04	765200 40800	765200 60800
15 x 1/2"	28	14	33	22	0,05	765200 41400	765200 61400
20 x 3/4"	36	15	38	27	0,10	765200 42000	765200 62000
25 x 1"	44	15	42	32	0,17	765200 42600	765200 62600
32 x 1"1/4"	50	17	45	38	0,21	765200 43000	765200 63000
40 1"1/2"	56	18	47	44	0,23	765200 43400	765200 63400
50 x 2"	68	20	51	57	0,37	765200 43800	765200 63800
65 2"1/2"	86	20	52	75	0,58	765200 44400	765200 64400
80 x 3"	100	25	57	89	0,67	765200 44800	765200 64800
100 x 4"	121	25	60	110	1,09	765200 45400	765200 65400

