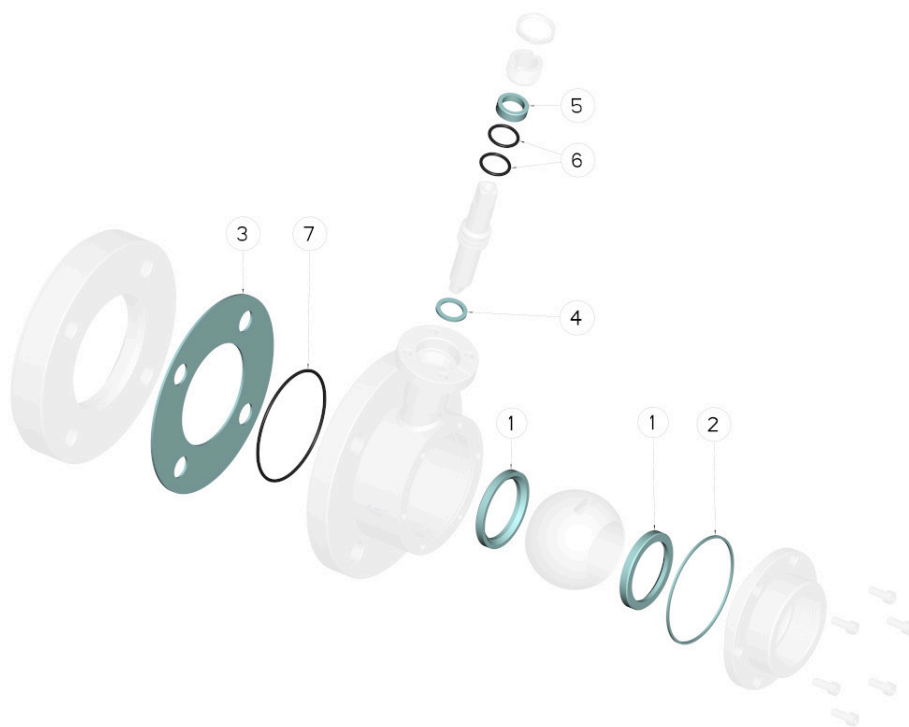


| DN | CODICE PTFE | Kg |
|-----|--------------|-------|
| 40 | 808015 03410 | 0,120 |
| 50 | 808015 03810 | - |
| 65 | 808015 04410 | - |
| 80 | 808015 04810 | - |
| 100 | 808015 05410 | - |
| 125 | 808015 05810 | - |



| POS. | DENOMINATION | PCS | MAT. |
|------|----------------------|-----|------|
| 1 | Ball Seals | 2 | PTFE |
| 2 | Sleeve Seal | 1 | PTFE |
| 3 | Flanges Seal | 1 | PTFE |
| 4 | Inferior stem Seal | 1 | PTFE |
| 5 | Upper stem Seal | 1 | PTFE |
| 6 | Stem or-Seal | 2 | FKM |
| 7 | OR di tenuta flangia | 1 | EPDM |

