

## 130155 INTEGRAL SEALS – REVOLVING THREADED FLANGES EN 1759-1 CLASS 150



TWO-way ball valve “Integral Seal”

Drive: Inox lever

Connection: Revolving threaded flanges EN 1759-1 CLASS 150

Flow: Full

Material: Aisi 316L (1.4404)

Measure: from 1/2" to 4"

Seals: Virgin P.T.F.E.

Operating temperature: -20°C+160°C

Outer finish: Polished

On request:

Antistatic device ATEX:

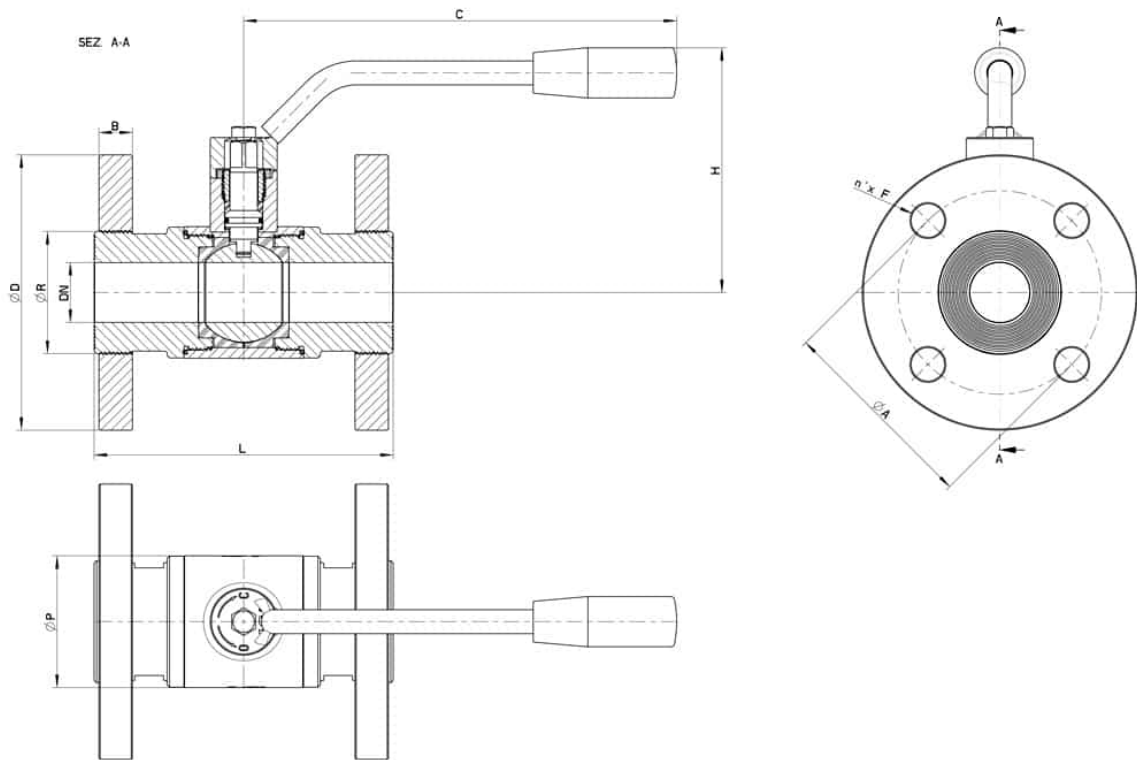
II 2G Ex h IIC T4 Gb

II 2D Ex h IIIC T135°C Db

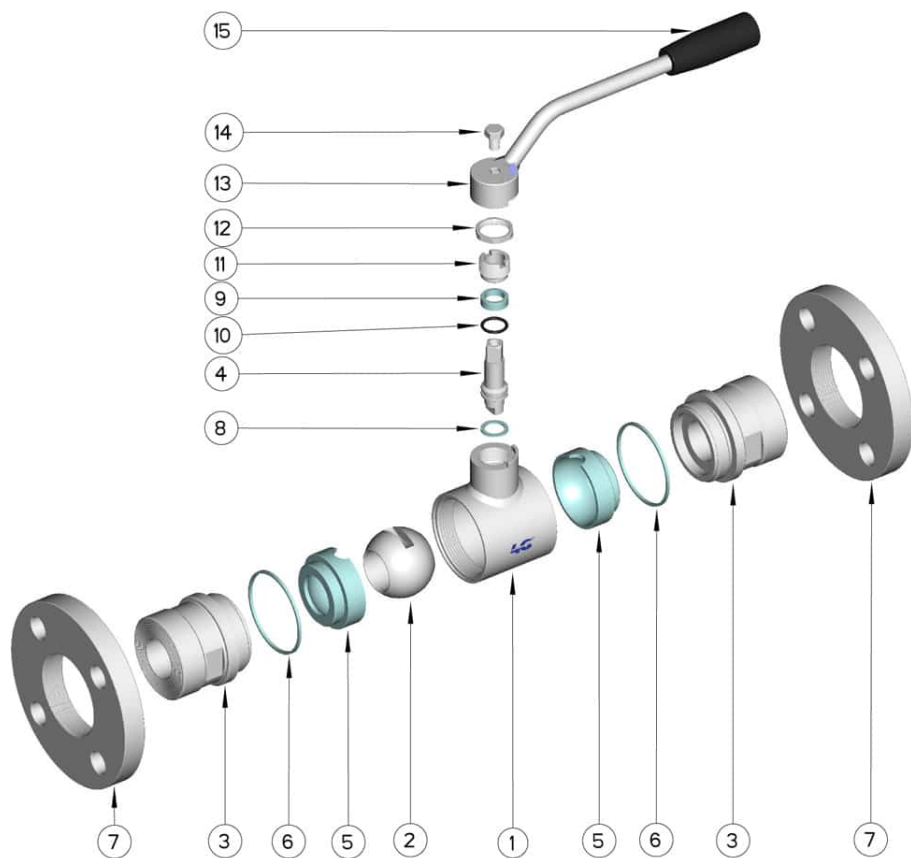
M.O.C.A. CE 1935/2004

• Seals made of:

PTFE with glass -20°C+170°C



CLASS 150	DN	L	C	H	Ø P	Ø D	B	Ø R	A	n° x F	Kg	CODE AISI 316L
1/2"	15	115	125	78	42	88,9	10	34	60,6	4x16	1,62	130155 61410
3/4"	20	120	170	91	48	98,4	13	42	69,8	4x16	2,43	130155 62010
1"	25	125	170	95	55	108	13	51	79,4	4x16	3,06	130155 62610
1" 1/4	32	130	170	100	65	117,5	14,5	63	88,9	4x16	3,98	130155 63010
1" 1/2	40	140	245	131	80	127	16	75	98,4	4x16	5,93	130155 63410
2"	50	150	245	138	95	152,4	17,5	89	120,6	4x19	8,43	130155 63810
2" 1/2	65	170	270	159	113	177,8	21	110	139,7	4x19	13,39	130155 64410
3"	80	180	300	170	140	190,5	22,2	120	152,4	4x19	17,70	130155 64810
4"	100	190	330	190	167	228,6	22,2	140	190,5	8x19	24,97	130155 65410



POS.	DENOMINATION	PCS	MAT.
1	Body	1	AISI 316L
2	Ball	1	AISI 316L
3	Sleeves	2	AISI 316L
4	Stem	1	AISI 316L
5	Flanges	2	AISI 316L
6	Ball Seals	2	PTFE
7	Sleeve Seals	2	PTFE
8	Stem Seal	1	PTFE
9	Stem Seal	1	PTFE
10	Stem or-Seal	1	FKM
11	Register ring	1	AISI 304L (303)
12	Nut	1	AISI 304L
13	Washer	1	AISI 304L
14	Lever	1	AISI 304L
15	Handle	1	DUROPLAST (PF)

