

## 130130 FOR ISO PIPE



TWO-way ball valve “Integral Seal”

Drive: Inox lever

Connection: **CLAMP normative DIN 32676 TAB.3 REIHE B**  
**For TUBE according to normative ISO 1127**

Flow: Full and reduced

Material: Aisi 316L (1.4404)

Measure: from DN10 to DN100

Seals: Virgin P.T.F.E.

Operating temperature: -20°C+160°C

Outer finish: Polished

On request:

Antistatic device ATEX:

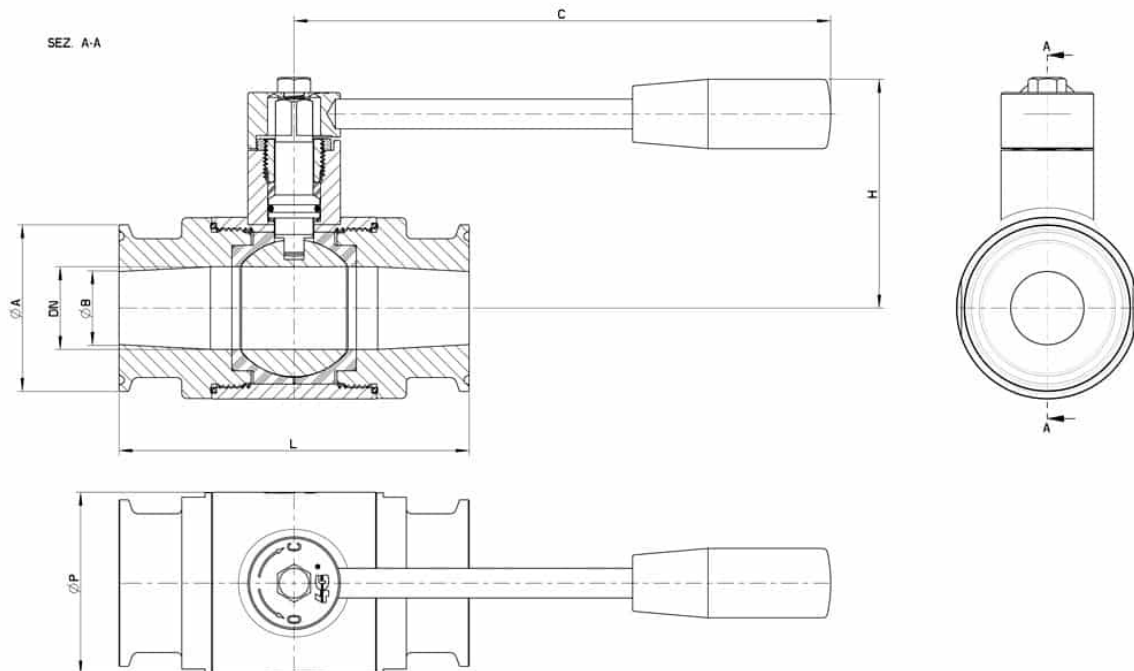
II 2G Ex h IIC T4 Gb

II 2D Ex h IIIC T135°C Db

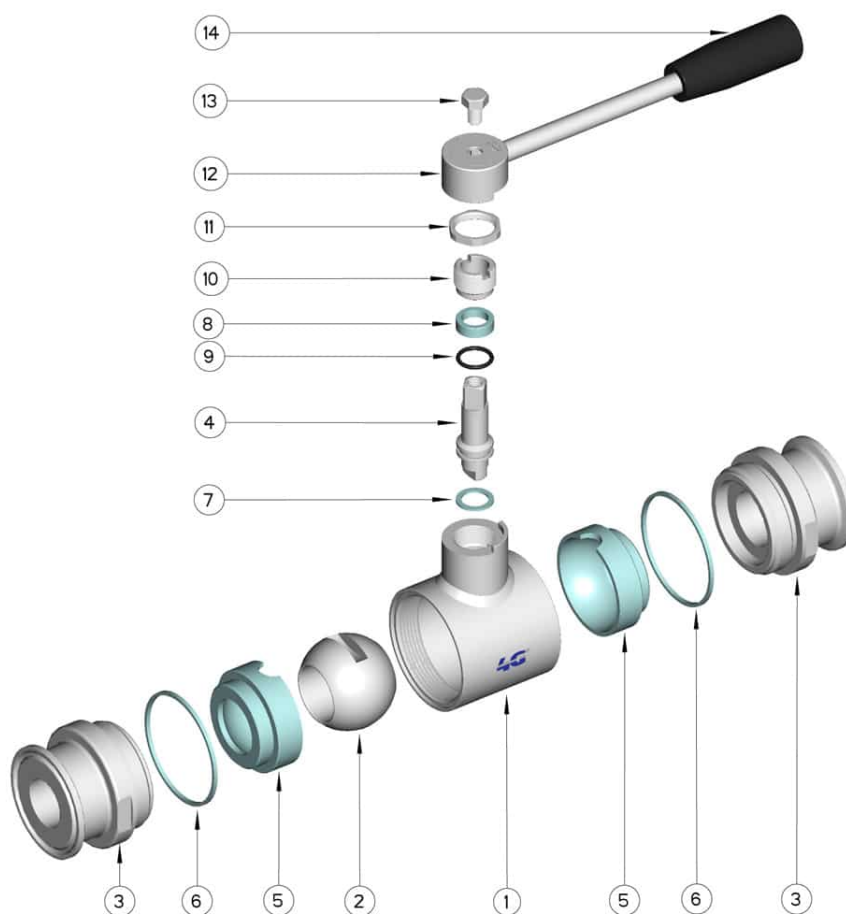
M.O.C.A. CE 1935/2004

• Seals made of:

PTFE with glass -20°C+170°C



CLAMP SERIE B DN/OD	DN	L	Ø A	Ø B	C	H	Ø P	PN	Kg	CODE AISI 316L
13.5	10	88	25	10.3	110	56	35	100	0,53	130130 61110
17.2	15	92	25	14	110	60	42	100	0,66	130130 61710
21.3	20	102	50,5	18.1	160	65	48	100	1,29	130130 62310
26.9	25	106	50,5	23.7	160	70	55	64	1,41	130130 62510
33.7	32	112	50,5	29.7	160	75	65	64	1,72	130130 63110
42.4	40	126	64	38.4	190	100	80	64	3,14	130130 63310
48.3	40	126	64	44.3	190	100	80	64	3,01	130130 63710
60.3	50	136	77.5	56.3	190	107	95	40	4,12	130130 64110
76.1	65	154	91	72.1	225	119	113	40	6,30	130130 64710
88.9	80	184	106	84.3	290	130	140	40	10,91	130130 65110
114.3	100	190	130	109.7	325	144	167	25	15,24	130130 65310



POS.	DENOMINATION	PCS	MAT.
1	Body	1	AISI 316L
2	Ball	1	AISI 316L
3	Sleeves	2	AISI 316L
4	Stem	1	AISI 316L
5	Ball Seals	2	PTFE
6	Sleeve Seals	2	PTFE
7	Stem Seal	1	PTFE
8	Stem Seal	1	PTFE
9	Stem or-Seal	1	FKM
10	Register ring	1	AISI 304L (303)
11	Nut	1	AISI 304L
12	Washer	1	AISI 304L
13	Lever	1	AISI 304L
14	Handle	1	DUROPLAST (PF)

